



# APPAREL

15|16

**G00F WHITE**

PANTONE 11-0601 TCX

**G52F LIME GREEN**

PANTONE 14-0452 TCX

**G23F GREY**

**G57F OLIVE NIGHT**

PANTONE 19-0515 TCX

**G34F HAWAIIAN OCEAN**

PANTONE 17-4540 TCX

**G63F FIERY RED**

PANTONE 18-1664 TCX

**G35F BRILLIANT BLUE**

PANTONE 18-4247 TCX

**G68F BEET RED**

PANTONE 19-2030 TCX

**G38F BLUE DEPTHS**

PANTONE 19-3940 TCX

**G99F BLACK**

PANTONE 19-4006 TCX

# SKIWEAR

## MEN

RC4

HANS KNAUSS



G63F Fiery Red



G52F Lime Green

G35F Brilliant Blue

G99F Black

### JACKET 040-0114

Sizes S / M / L / XL / XXL

#### Material

DrymaxX Ultimate RC stretch  
Waterproofness 20 000 mm /  
breathability 15 000g/m2/24h

#### Lining

Air mesh / Active Dry Mesh / 100% PA

#### Insulation

Microtherm 80

**DrymaxX**  
stretch

ACTIVE DRY

microtherm®

#### Features

- Slim fitting
- Taped seams
- Water repellent front zipper
- Water repellent chest pocket zippers
- Moisture wicking active dry lining
- Warm microtherm wadding
- Lycra cuffs
- Detachable hood
- Cord adjustable hood and hem
- Velcro adjustable cuffs
- Zip ventilations
- Detachable snowgaiter
- Goggle wipe
- Audio pocket
- Ski pass pocket

### PANTS 040-0116

Sizes S / M / L / XL / XXL

#### Material

DrymaxX Ultimate RC stretch  
Waterproofness 20 000 mm /  
breathability 15 000g/m2/24h

#### Lining

Air mesh / Active Dry Recycled / 100% PA

#### Insulation

Microtherm 40

**DrymaxX**  
stretch

ACTIVE DRY  
RECYCLED

microtherm®

#### Features

- Slim fitting
- Taped seams
- Water repellent ventilation zippers
- Moisture wicking active dry lining
- Warm microtherm wadding
- Adjustable waist
- Reinforced leg ends
- Snowgaiter at leg ends
- Detachable suspenders



G38F Blue Depths

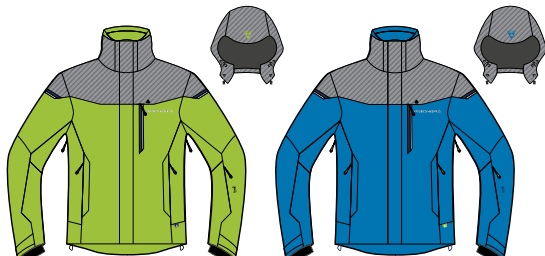
G52F Lime Green

G99F Black

## LATERNS



G63F Fiery Red



G52F Lime Green



G35F Brilliant Blue

## JACKET 040-0117

Sizes S / M / L / XL / XXL

## Material

DrymaxX Ultimate RC stretch  
DrymaxX Ultimate Melange  
Waterproofness 20 000 mm /  
breathability 15 000g/m2/24h

## Lining

Active Dry Mesh/ 100%PA

## Insulation

Microtherm 80

DrymaxX  
stretch

ACTIVE DRY

microtherm®

## Features

- Slim fitting
- Taped seams
- Water repellent chest pocket zipper
- Moisture wicking active dry lining
- Warm microtherm wadding
- Lycra cuffs
- Detachable hood
- Cord adjustable hood and hem
- Velcro adjustable cuffs
- Snowgaiter
- Goggle cloth
- Ski pass pocket

## FLIMS



G99F Black



G35F Brilliant Blue



G38F Blue Depths

## JACKET 040-0119

Sizes S / M / L / XL / XXL

## Material

DrymaxX Ultimate RC stretch  
DrymaxX Ultimate Melange  
Waterproofness 20 000 mm /  
breathability 15 000g/m2/24h

## Lining

Active Dry Mesh / 100% PA

## Insulation

Microtherm 80

DrymaxX  
stretch

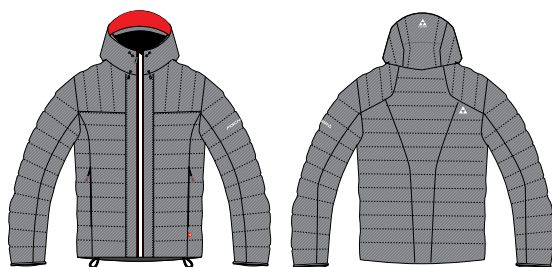
ACTIVE DRY

microtherm®

## Features

- Slim fitting
- Taped seams
- Moisture wicking active dry lining
- Warm microtherm wadding
- Lycra cuffs
- Detachable hood
- Cord adjustable hood and hem
- Velcro adjustable cuffs
- Snowgaiter
- Goggle cloth
- Ski pass pocket

## MONTAFON



G23F Grey Melange



G99F Black



G35F Brilliant Blue

## JACKET 040-0120

Sizes S / M / L / XL / XXL

## Material

Ripstop down  
DrymaxX Ultimate Melange

## Lining

100% PA

## Insulation

70% down 30% feather



## Features

- Slim fitting
- Fixed hood
- Cord adjustable hood and hem
- Soft elastic edge band cover sleeve end



INNSBRUCK



G99F Black

G23F Grey Melange

G52F Lime green

G38F Blue Depths

## PANTS 040-0121

Sizes S / M / L / XL / XXL

### Material

DrymaxX Ultimate RC stretch  
DrymaxX Ultimate Melange  
Waterproofness 20 000 mm /  
breathability 15 000g/m2/24h

### Lining

100% PA / Active dry mesh

### Insulation

Microtherm 40

**DrymaxX**  
stretch

ACTIVE DRY

microtherm®

### Features

- Slim fitting
- Taped seams
- Moisture wicking active dry lining
- Warm microtherm wadding
- Adjustable waist
- Reinforced leg ends
- Snowgaiter at leg ends

SKIWEAR

OBERJOCH



G52F Lime Green



G35F Brilliant Blue

## JACKET 040-0122

Sizes S / M / L / XL / XXL

### Material

Arcty stretch soft

## ARCTY

### Features

- Soft and comfortable
- Elastic cuffs
- Elastic hem
- Front pockets

TURNAU



G99F Black



G52F Lime Green



G35F Brilliant Blue

## SHIRT 040-0123

Sizes S / M / L / XL / XXL

### Material

Arcty active dry stretch

### Lining

Active

### Insulation

Microth

ACTIVE DRY

### Features

- Soft and comfortable
- Active dry
- Elastic cuffs
- 1/2 zipper

## WOMEN

RC4

CHAMPERY



G52F Lime Green



G34F Hawaiian Ocean

## JACKET 040-0125

Sizes 34 / 36 / 38 / 40 / 42 / 44

## Material

DrymaxX Ultimate RC stretch  
Waterproofness 20 000 mm /  
breathability 15 000g/m2/24h

## Lining

Air mesh / Active Dry Mesh / 100% PA

## Insulation

Microtherm 80

DrymaxX  
stretch

ACTIVE DRY

microtherm®

## Features

- Slim fitting
- Taped seams
- Water repellent front zipper
- Water repellent chest pockets zipper
- Moisture wicking active dry lining
- Warm microtherm wadding
- Lycra cuffs
- Fixed hood
- Cord adjustable hood and hem
- Velcro adjustable cuffs
- Zip ventilations
- Snowgaiter
- Goggle wipe
- Ski pass pocket

MONGIE



G23F Grey Melange



G68F Beet Red

G38F Blue Depths

## JACKET 040-0127

Sizes 34 / 36 / 38 / 40 / 42 / 44

## Material

DrymaxX Ultimate RC stretch  
Waterproofness 20 000 mm /  
breathability 15 000g/m2/24h

## Lining

Air mesh / Active Dry Mesh / 100% PA

## Insulation

Microtherm 80

DrymaxX  
stretch

ACTIVE DRY

microtherm®

## Features

- Slim fitting
- Taped seams
- Moisture wicking active dry lining
- Warm microtherm wadding
- Lycra cuffs
- Fixed hood
- Cord adjustable hood and hem
- Velcro adjustable cuffs
- Snowgaiter
- Goggle wipe
- Ski pass pocket

CERKNO



G23F Grey Melange



G63F Fiery Red

G38F Blue Depths

## JACKET 040-0128

Sizes 34 / 36 / 38 / 40 / 42 / 44

## Material

Ripstop down  
DrymaxX Ultimate Melange

## Lining

100% PA

## Insulation

70% down 30% feather



## Features

- Slim fitting
- Fixed hood
- Cord adjustable hood and hem
- Soft elastic edge band cover sleeve end

RC4

SAPPORO



G63F Fiery Red

G68F Beet Red

G34F Hawaiian Ocean

G38F Blue Depths

G23F Grey Melange

## PANTS 040-0129

Sizes 34 / 36 / 38 / 40 / 42 / 44

### Material

DrymaxX Ultimate RC stretch  
DrymaxX Ultimate Melange  
Waterproofness 20 000 mm /  
breathability 15 000g/m2/24h

### Lining

Air mesh / Active Dry Recycled /  
100% PA/ 100% PA

### Insulation

Microtherm 40

**DrymaxX**  
stretch

**ACTIVE DRY**  
RECYCLED

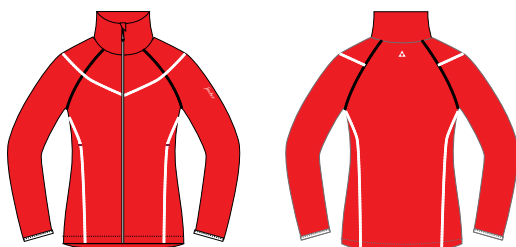
**microtherm®**

### Features

- Slim fitting
- Taped seams
- Moisture wicking active dry lining
- Warm microtherm wadding
- Adjustable waist
- Reinforced leg ends
- Snowgaiter at leg ends

SKIWEAR

MUTTERS



G63F Fiery Red



G68F Beet Red

G34F Hawaiian Ocean

## JACKET 040-0130

Sizes 34 / 36 / 38 / 40 / 42 / 44

### Material

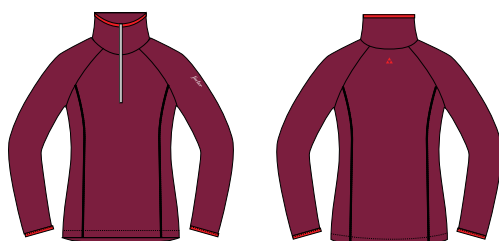
Arcty stretch soft

## ARCTY

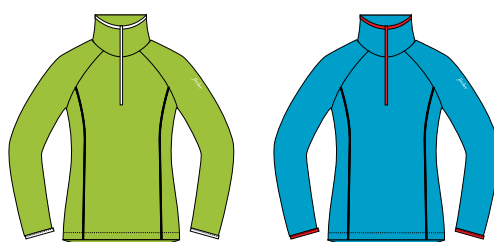
### Features

- Soft and comfortable
- Elastic cuffs
- Front pockets

ASPEN



G68F Beet Red



G52F Lime Green

G34F Hawaiian Ocean

## SHIRT 040-0131

Sizes 34 / 36 / 38 / 40 / 42 / 44

### Material

Arcty active dry stretch

**ACTIVE DRY**

### Features

- Soft and comfortable
- Active dry
- Elastic cuffs
- 1/2 zipper

## JUNIOR

## BROMONT



G52F Lime Green



G35F Brilliant Blue

## JACKET 040-0133

Sizes 100 / 110 / 120 / 130 / 140 / 150 / 160

**Material**

DrymaxX JR  
Waterproofness 5 000 mm /  
breathability 5 000g/m2/24h

**Lining**

100% PA

**Insulation**

Microtherm 80

**DrymaxX** *microtherm®*

**Features**

- Taped seams
- Warm microtherm wadding
- Lycra cuffs
- Detachable hood
- Cord adjustable hem
- Velcro adjustable cuffs
- Snowgaiter
- Goggle wipe

## VALLOIRE



G63F Fiery Red



G52F Lime Green

## JACKET 040-0134

Sizes 100 / 110 / 120 / 130 / 140 / 150 / 160

**Material**

DrymaxX JR  
Waterproofness 5 000 mm /  
breathability 5 000g/m2/24h

**Lining**

100% PA

**Insulation**

Microtherm 80

**DrymaxX** *microtherm®*

**Features**

- Taped seams
- Warm microtherm wadding
- Lycra cuffs
- Detachable hood
- Cord adjustable hem
- Velcro adjustable cuffs
- Snowgaiter
- Goggle wipe
- Ski pass pocket

## LAAX



G63F Fiery Red



G52F Lime Green G38F Blue Depths

## PANTS 040-0135

Sizes 100 / 110 / 120 / 130 / 140 / 150 / 160

**Material**

DrymaxX JR  
Waterproofness 5 000 mm /  
breathability 5 000g/m2/24h

**Lining**

100% PA

**Insulation**

Microtherm 80

**DrymaxX** *microtherm®*

**Features**

- Taped seams
- Warm microtherm wadding
- Elastic waist
- Reinforced leg end
- Snowgaiter

## ACCESSORIES

### INNERKRENS



G38F Blue Depths

G99F Black

G52F Lime Green

### HAT 040-0136

Sizes One size

#### Material

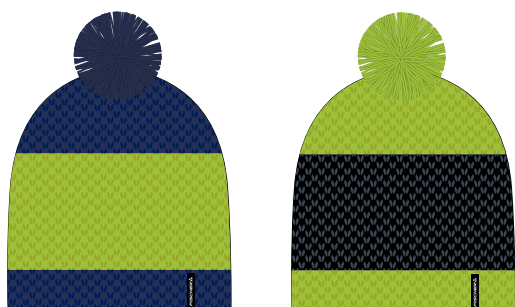
Knitted 50 % wool 50 % acrylic

#### Lining

½ stormwall lining



### LACKENHOF



G38F Blue Depths

G52F Lime Green

### HAT 040-0137

Sizes One size

#### Material

Knitted 50 % wool 50 % acrylic

#### Lining

½ stormwall lining



### SAUDA



G38F Blue Depths

G68F Beet Red

G63F Fiery Red

### HAT 040-0138

Sizes One size

#### Material

Knitted 50 % wool 50 % acrylic

#### Lining

½ stormwall lining









# DRYMAXX – WATERPROOF, WINDPROOF, BREATHABLE, TESTED

DrymaxX brand clothing is designed to perform in extreme conditions. It provides protection and comfort in wind, rain and snow. A garment made from DrymaxX fabric with the right structural features is guaranteed to perform.

**DrymaxX is a water- and windproof, breathable material that's suitable for use even in severe conditions. The material's properties are determined by the DrymaxX membrane. The DrymaxX membrane is bonded to the garment's surface and/or lining fabric, depending on the garment's intended use. The dense DrymaxX membrane is full of tiny microscopic pores which are too small for the surface tension of water, so water droplets cannot penetrate it. However, tiny molecules of water vapour can pass through to the outside, giving the material its breathability.**

## Construction of DrymaxX products:

DrymaxX fabric on its own is not enough to make a product waterproof. DrymaxX products are designed and manufactured in such a way that their construction prevents moisture getting inside. All seams are protected with seam tape. Embroidery and logos are taped on the inside of the product. Pockets, zips and vents are designed so as not to let moisture inside the product.

Besides clothing, DrymaxX is used in footwear, gloves and headgear.

## Washing and care instructions for DrymaxX products:

DrymaxX products must be washed separately, inside out. Spinning, tumble drying and wringing may damage the product. Do not dry clean. Specific washing instructions for each DrymaxX product can be found on the care label.

## DON'T DAMAGE THE DRYMAXX MEMBRANE!

The DrymaxX membrane may be damaged by perforations caused by safety pins, etc. If a DrymaxX product develops a tear or hole, it must be taped after sewing to ensure that it is waterproofed. The use of waterproofing substances containing silicone is not recommended.

## Drymaxx Stretch

In DrymaxX Stretch fabrics, a stretchy fibre is woven into the structure of the fabric. The fabric can stretch up to 20%. The stretchy material enables form-fitting styles without sacrificing comfort. DrymaxX Stretch fabrics are available as two-layer and three-layer versions.

# DrymaxX

## stretch



microtherm®

ARCTY

ACTIVE DRY

## Materials used in the collection:

### Stormwall Softshell

Stormwall is a windproof and water-resistant, breathing membrane which is combined with the most suitable outer and liner fabric for each purpose. Its flexible structure guarantees well-fitting and comfortable clothing for all types of outdoor activities.

### Arcty

Arcty materials represent the latest generation of high-tech heat insulation materials. Arcty grades are ideal for mid layers, because their porous microstructure efficiently wicks moisture away from the base layer to the outermost layers of clothing. Excellent breathability and an exceptional weight to heat insulation ratio make Arcty fabrics the best possible protection against cold weather.

### Active Dry

is a material that efficiently wicks moisture away from your skin and keeps you feeling pleasantly dry, even in intense use. The material does not absorb water itself, so it dries quickly. Active Dry is particularly suitable for wear as a base layer against bare skin in active sports.

### ELASTANE

is a stretchy fibre which, when used in fabrics, improves the fit of garments made with them. Stretchy fabrics enable form-fitting styles without sacrificing comfort.

### Micro Technology

The microscopically thin fibres used in this fabric make it dense, breathable and windproof. Extremely light, these fabrics are particularly well suited for all kinds of active outdoor pursuits. Micro Technology fabrics protect you against strong wind, but also allow moisture to escape efficiently.

### Microtherm

Lightweight and pressed-thin padding, which functions wonderfully as thermal insulation with technical and waterproof materials. This microfibre padding is supple and warm. It maintains its characteristics well during hard use and washing.



Find the distributors in your country on  
[www.fischersports.com/apparel/distributors](http://www.fischersports.com/apparel/distributors)